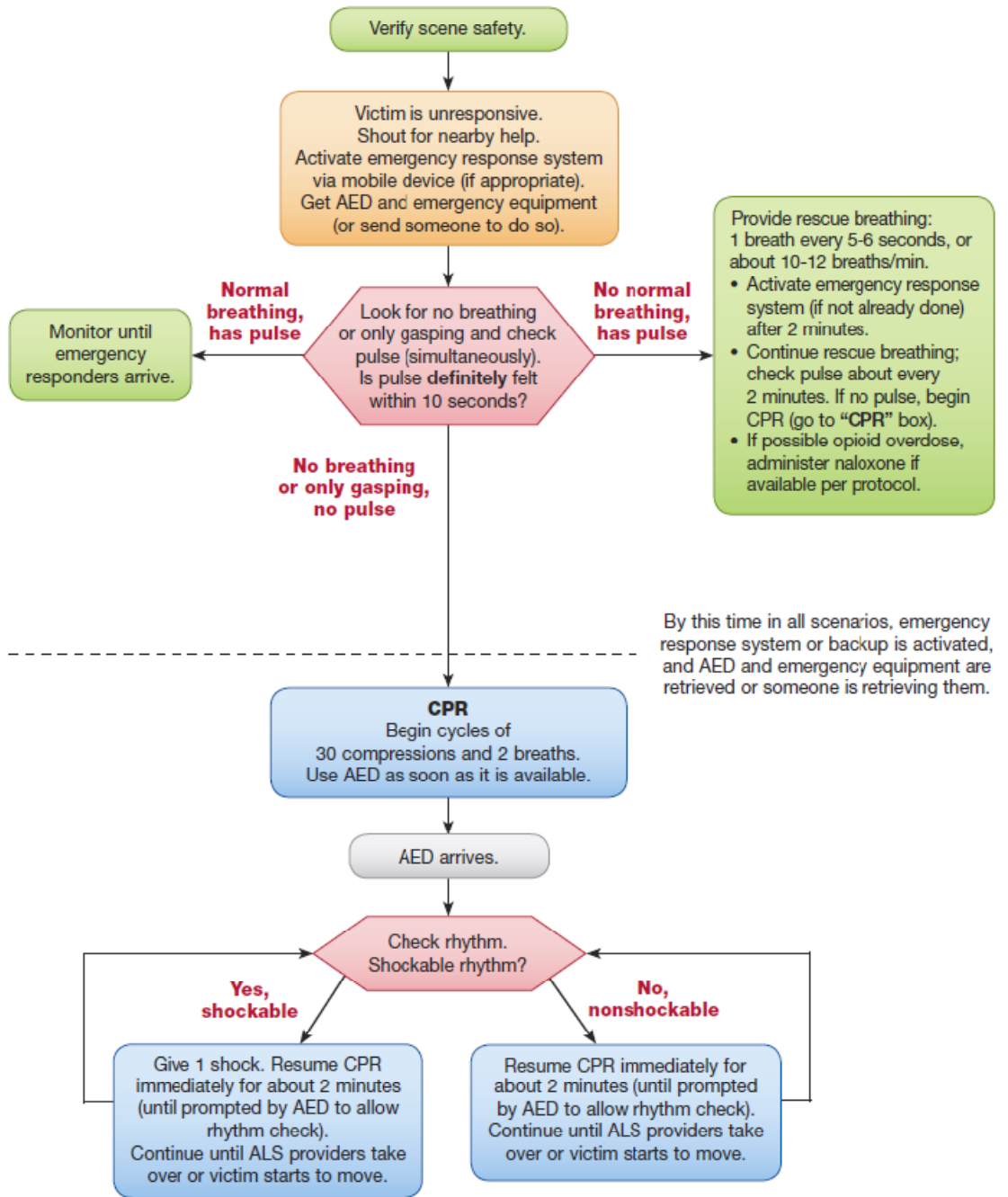


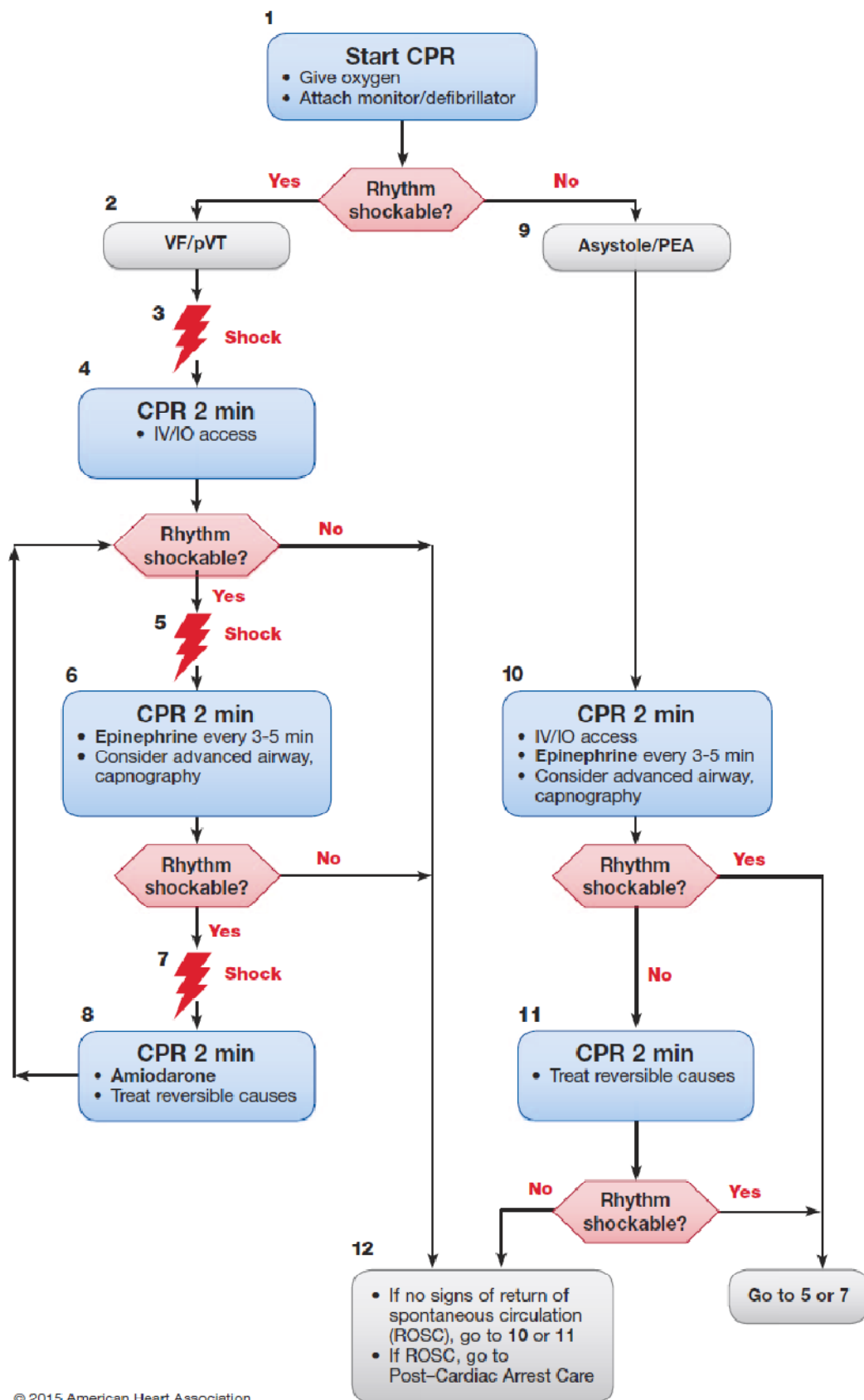
**BLS Healthcare Provider
Adult Cardiac Arrest Algorithm—2015 Update**



© 2015 American Heart Association

Figure 1. BLS Healthcare Provider Adult Cardiac Arrest Algorithm—2015 Update.

Adult Cardiac Arrest Algorithm—2015 Update



© 2015 American Heart Association

Figure 2. Adult Cardiac Arrest Algorithm—2015 Update.

CPR Quality

- Push hard (at least 2 inches [5 cm]) and fast (100-120/min) and allow complete chest recoil.
- Minimize interruptions in compressions.
- Avoid excessive ventilation.
- Rotate compressor every 2 minutes, or sooner if fatigued.
- If no advanced airway, 30:2 compression-ventilation ratio.
- Quantitative waveform capnography
 - If $PETCO_2 < 10$ mm Hg, attempt to improve CPR quality.
- Intra-arterial pressure
 - If relaxation phase (diastolic) pressure < 20 mm Hg, attempt to improve CPR quality.

Shock Energy for Defibrillation

- **Biphasic:** Manufacturer recommendation (eg, initial dose of 120-200 J); if unknown, use maximum available. Second and subsequent doses should be equivalent, and higher doses may be considered.
- **Monophasic:** 360 J

Drug Therapy

- **Epinephrine IV/IO dose:** 1 mg every 3-5 minutes
- **Amiodarone IV/IO dose:** First dose: 300 mg bolus. Second dose: 150 mg.

Advanced Airway

- Endotracheal intubation or supraglottic advanced airway
- Waveform capnography or capnometry to confirm and monitor ET tube placement
- Once advanced airway in place, give 1 breath every 6 seconds (10 breaths/min) with continuous chest compressions

Return of Spontaneous Circulation (ROSC)

- Pulse and blood pressure
- Abrupt sustained increase in $PETCO_2$ (typically ≥ 40 mm Hg)
- Spontaneous arterial pressure waves with intra-arterial monitoring

Reversible Causes

- Hypovolemia
- Hypoxia
- Hydrogen ion (acidosis)
- Hypo-/hyperkalemia
- Hypothermia
- Tension pneumothorax
- Tamponade, cardiac
- Toxins
- Thrombosis, pulmonary
- Thrombosis, coronary